

SpacePole

Kiosk™



SpacePole Kiosk summary slide



Independent of hardware and technology manufacturer

Upcycling existing hardware and mix and match between preferred hardware brands and models.

Modular

Floor, wall or countertop options. Same SKUs covers multiple use cases and ensures an easy and cost-effective upgrade path.

Independent of hardware and technology manufacturer

A wide range of configuration options with internal and external peripheral options. Support screen sizes from 10" to 32".

Configurable

A wide range of configuration options with internal and external peripheral options. Support screen sizes from 10" to 32".

Customizable

Easy to modify to meet unique requirements (screen protection, specific color, specific hardware combination etc.)



SpacePole Kiosk summary slide



Compatibility

- Compatible with screens and tablets from **10" to 32"** (Portrait & landscape)
- Supports **payment devices** from more than 20 different payment manufacturers
- Compatible with a **wide range of printer and scanner brands**.

SPK100	Kiosk top module
SPK200	Kiosk center module (blank)
SPK201	Kiosk center module (Integrated printer + scanner)
SPK300	Kiosk freestanding module
SPK500	Kiosk scanner cover + bracket for Datalogic GFS4470 serie
SPK501	Kiosk printer cover for Star Mc-Print 2-3 / Epson TM- M30
SPK510	Kiosk blanking plate
SPK502	Kiosk wall bracket
SPK503	Kiosk peripheral arm
SPK504	Kiosk top pole
SPK511	Kiosk straight bracket Portrait 22"-15"
SPK512	Kiosk straight bracket landscape 22" to 15"
SPK506	Kiosk mover



Applications for different environments



Modular, configurable, customisable...

Self-Ordering

Endless Aisle

Product Information

Price checker

Registry

Access Control



Customer Loyalty

Ticketing

Self Check-in/out

Assisted Checkout

Self Scanning

Self-Service – Today's Market

Self-Service – The new normal

60%
Prefer Self-Service

36%
Have increased their use
of self-service

48%
Use self-service all the time
when available

3%
Prefer not to use
self-service

85%
Believe self-service is faster
than waiting in line



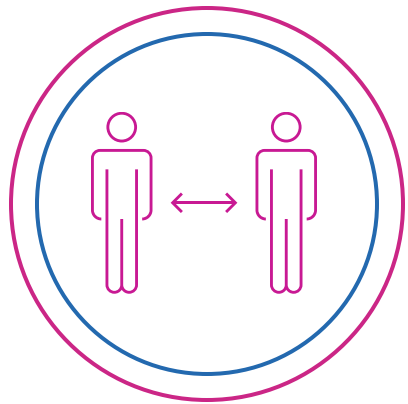
These findings show that having self-service options is not a **competitive advantage**, but a **competitive requirement**

Self-Service – Customer Benefits

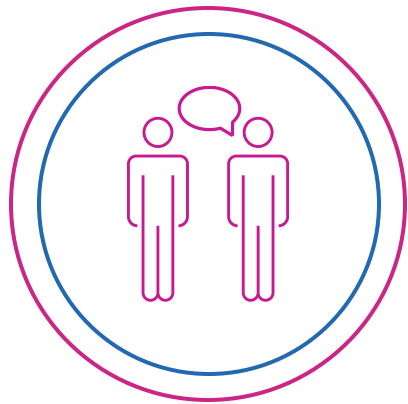


Self-Service: No longer a choice, a necessity

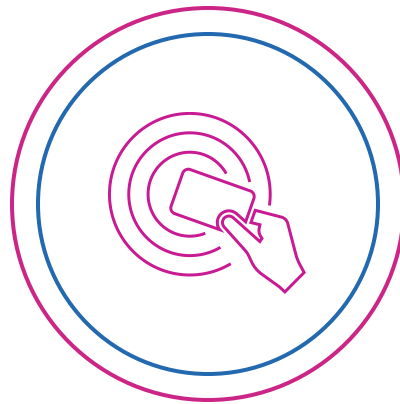
What research shows matters today:



Less physical interaction with staff



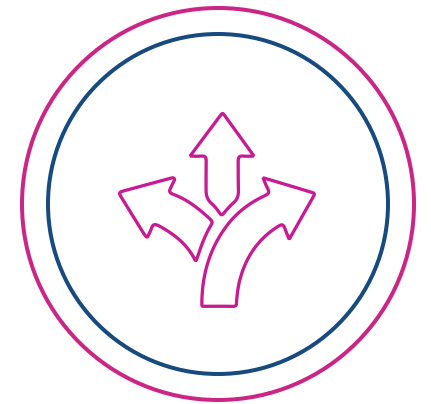
Social distancing



Frictionless experience



Accessibility for all

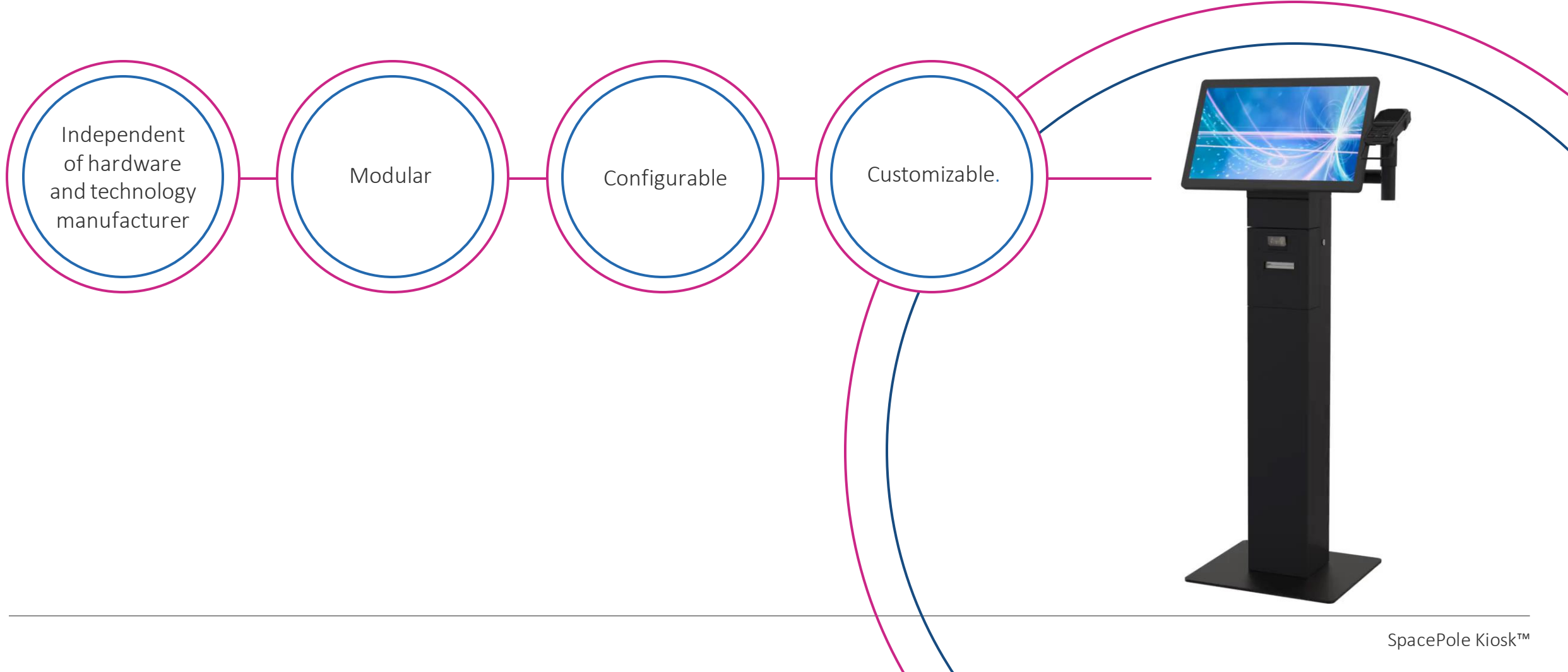


Customer choice

Self-Service – It is easier than you think



SpacePole Kiosk



Use cases

Just a few examples



Price checker



Self service ordering



Click & collect



Self service check out

SpacePole Kiosk



Modular: Go from wall mount to counter to freestanding with the same configurations



Wall



Counter



Freestanding

SpacePole Kiosk



Configurable: Configure the solution based on your selection of hardware (payment, scanner, printer etc.)
Independently of manufacturer

Select your VESA compliant screen or tablet
10" to 32" and orientation of screen

Select your scanner
Datalogic GFS4470 serieS or other

Select your printer

- Bixolon SRP-Q300
- HP Engage One Serial / USB Thermal printer
- Star MC-Print 3
- Epson TM-M30
- Or other



Select your peripherals
Second screen, camera etc.

Select your payment device
Standard SP1 arm compatible with
DuraTilt + Multigrip / printer plates etc.

Configure it as you want



SpacePole Kiosk



Customizable: The solution is easy to customize to your unique requirements: specific color, other types of hardware, design modification etc

Select other types of peripherals:

- NFC reader
- Camera
- Fingerprint reader
- Traffic light
- And more



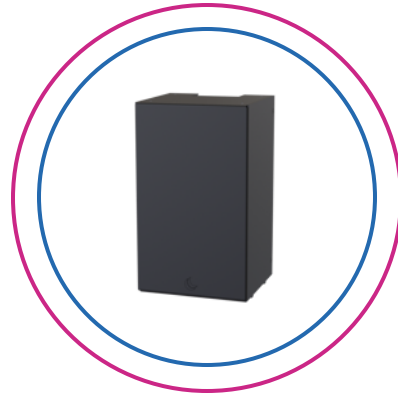
Select screen protection glass

Select your colour
(black for antimicrobial)

SpacePole Kiosk configs



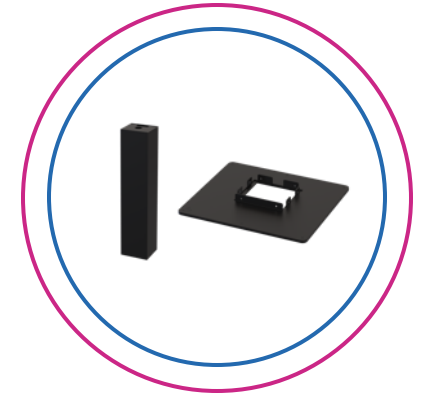
SPK100
Kiosk top module



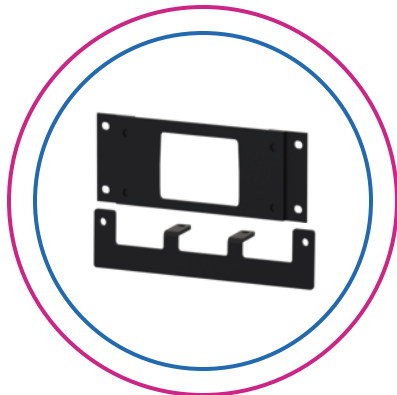
SPK200
Kiosk center module (blank)



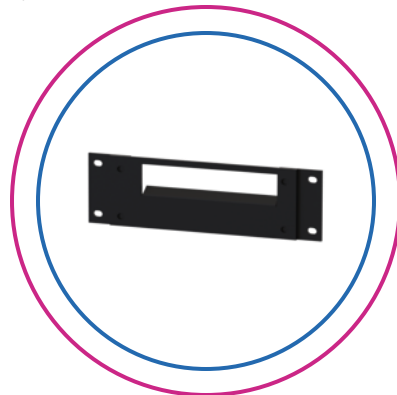
SPK201
Kiosk center module (Integrated printer
+ scanner)



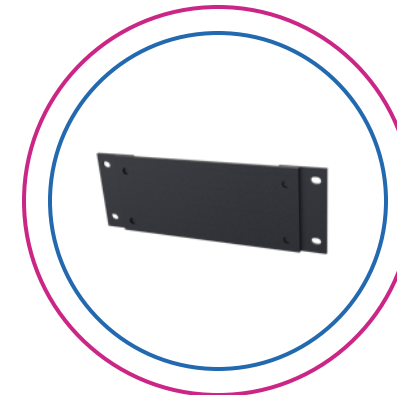
SPK300
Kiosk freestanding module



SPK500
Kiosk scanner cover + bracket for
Datalogic GFS4470 serie

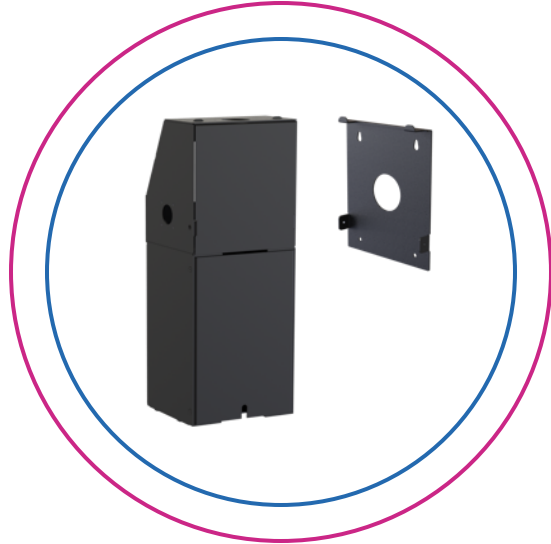


SPK501
Kiosk printer cover for Star Mc-Print 2-3
/ Epson TM-M30

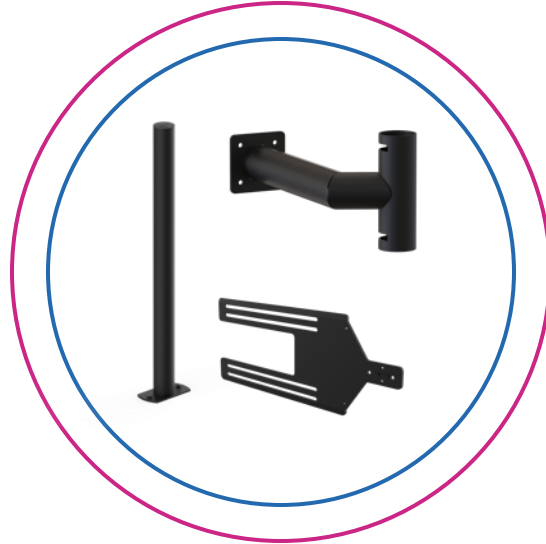


SPK510
Kiosk blanking plate

SpacePole Kiosk Accessories



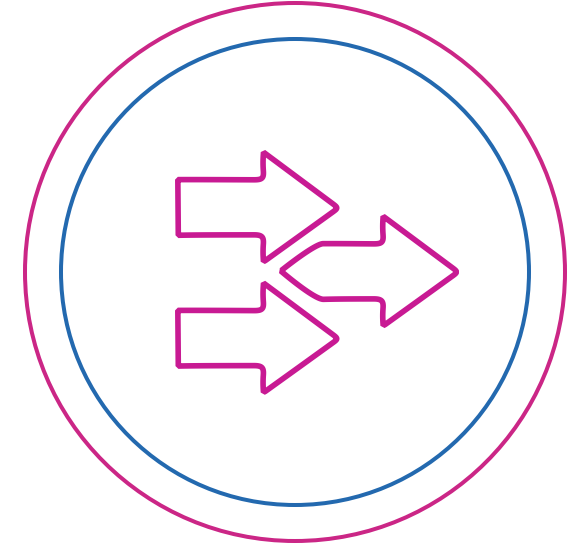
SPK502: Kiosk wall bracket



- SPK503: Kiosk peripheral arm
- SPK504: Kiosk top pole
- SPK511: Kiosk straight bracket (portrait)
- SPK512: Kiosk straight bracket (landscape)



SPK506: Kiosk mover



Post launch

- Table for freestanding
- Bagging shelf module
- Baseplate for counter

SpacePole Kiosk – Marketing Collaterals



Product sheet (English, German & French)

Product Presentation

Config Sheets

Installation Guide

Self Service QRG

Pictures (wide range of Lifestyle & Renders)

Everything available on ES Partner portal



